

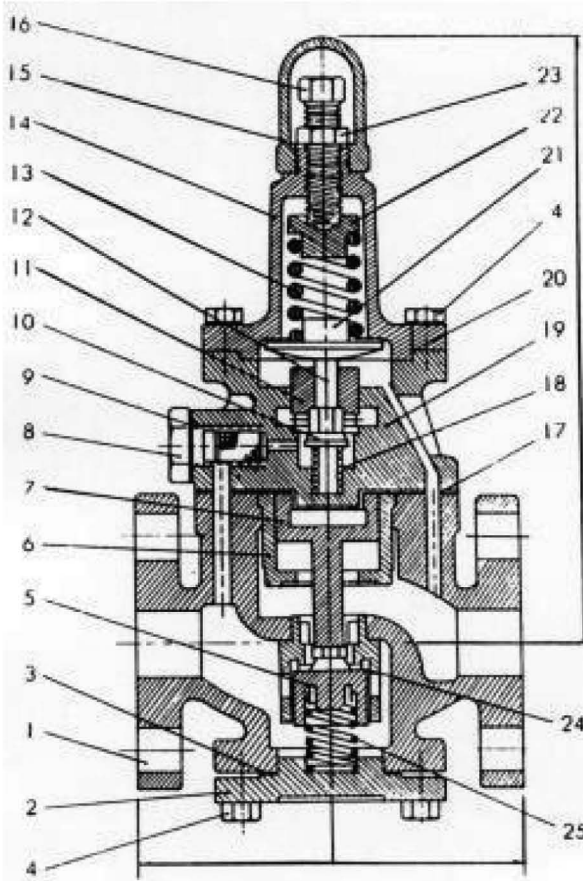


AK-8151
PRESSURE REDUCING VALVES, FLANGED ENDS
 MAYERIAL: C.I. FC-20
 FULL PORT, SAND CASTING
 SIZE: 1/2" THRU 6"

WORKING CONDITION

WORKING PRESSURE	0.1-10KG/CM2
MAX. WORKING TEMPERATURE	200°C
MEDIUM	STEAM

: MATERIAL LIST :



NO.	PARTS NAME	MATERIAL
01	MAIN BODY	CAST IRON FC-20
02	BUTTOM COVER	CAST IRON FC-20
03	GASET	ASBESTOS
04	SCREW	SUS 304
05	SPRING HOLDER	BRONZE
06	CYLINDER	BRONZE
07	PISTON	BRONZE
08	SCREW	CARBON STEEL
09	SCREEN	SUS 304
10	SPRING KNOB	CARBON FILLED PTFE
11	PIN GUIDE	SUS 304
12	FLOATING PIN	SUS 304
13	UPPER SPRING	SUP-6
14	TOP UD	CAST IRON FC-20
15	TOP CAP	CAST IRON FC-20
16	ADJUSTING SCREW	BRASS
17	BODY GASKET	ASBESTOS
18	SETRAL SPRING	SUP-6
19	TRANSIT BODY	CAST IRON FC-20
20	DIAPHRAGM DISC	SUSP 27CP
21	SPRING KNOB	CAST IRON FC-20
22	SPRING HOLDER	CAST IRON FC-20
23	POSITIONING NUT	BRASS
24	GASKET	PTFE
25	LOWER SPRING	SUS 304

: DIMENSIONAL LIST :

SIZE	INCH	1/2"	3/4"	1"	1-1/4"	1-1/2"	2"	2-1/2"	3"	4"	5"	6"	FLANGED
	MM	15	20	25	32	40	50	65	80	100	125	150	FLANFED
L		155	155	165	195	195	225	250	290	330	410	410	LB KG/CM
H		270	270	275	290	295	310	320	320	370			