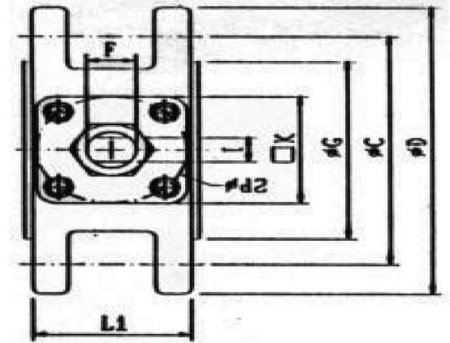
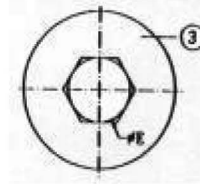
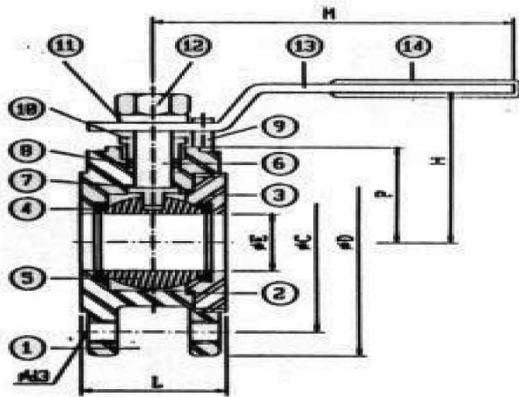




AK-8130
1-PC WAFER TYPE BALL VALVES
 WITH ISO 5211 MOUNTING PAD,
 MATERIAL : S.S. 316 & C.S. WCB.
 FULL PORT, FLANGED PN 16/40
 SIZE : DN 15 THRU DN 100



AK -8130

ITEM	PART NAME	MATERIAL		Q'TY
		316	WCB	
1	BODY	1.4408	1.0619	1
2	GASKET	PTFE	1.0619	1
3	RING NUT	CFBM	WCB	1
4	SEAT	PTFE	PTEE	2
5	BALL	AISI 316	AISI 304	1
6	STEM	AISI 316	AISI 304	1
7	STEM SEAL	PTFE	PTFE	1
8	SREM PACKING	PTFE	PTFE	1
9	STOP	AISI 304	AISI 304	1
10	GLAND NUT	AISI 304	AISI 304	1
11	SPRING WASHERS	AISI 304	AISI 304	1
12	NUT	AISI 304	AISI 304	1
13	HANDLE	AISI 304	AISI 304	1
14	PLASTIC COVER	PLASTIC	P;ASTIC	1

SIZE	PN	DN	ISO-5211	C	D	d2	d3	E	F	G	H	I	K	L	L1	M	P
1/2"	PN16-40	15	F03	65	95	25	M12*4	15	8	48	63	5	36	35	31	105	32
3/4"	PN16-40	20	F03	75	105	25	M12*4	20	8	58	66	5	36	38	34	105	35
1"	PN16-40	25	F04	85	115	30	M12*4	25	11.2	68	76	8	42	42	38	158	39
1-1/4"	PN16-40	32	F04	100	140	30	M16*4	32	11.2	78	85	8	42	50	46	158	50
1-1/2"	PN16-40	40	F05	110	150	35	M16*4	38	12.7	88	110	9	50	60	54	183	54
2"	PN16-40	50	F05	125	165	35	M16*4	50	12.7	102	118	9	50	80	64	183	63
2-1/2"	PN16	65	F07	145	185	55	M16*4	65	20	122	131	12	70	94	88	243	79
3"	PN16-40	80	F07	160	200	55	M16*8	80	20	138	152	12	70	118	112	243	87
4"	PN16	100	F10	180	220	70	M16*8	100	24	158	182	18	102	140	134	328	108