

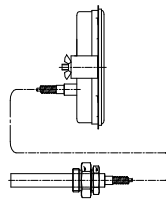
CAPILLARY DIAL THERMOMETERS

Type TXC, with stainless steel case according to EN 13190

STANDARD MODEL:

CASE	: bayonet lock, AISI304/1.4301, IP-65
CAPILLARY TUBE	: see page 24 (upto 100 meters)
STEM AND BULB	: AISI321/1.4541, see page 25, 27
CONNECTION	: AISI304/1.4301, see page 25 -27
WINDOW	: mineral glass 4 mm
DIAL	: aluminium, black figures on white
POINTER	: aluminium, black
RANGES	: from -200 upto +800°C, see page 28 - 30

EXAMPLE:



TXC160XH

ADJUSTMENT	: +/- 6 % F.S. with adj. screw at the side
OVERLOAD	: up to 30% F.S. (but max. 800°C)
ACCURACY	: ±1% F.S. / class 1
MOVEMENT	: brass
OPTIONS	: see page 32
CONTACTS	: see page 33 - 41,43
PT-100	: see page 42
TRANSMITTER	: see page 34,42

TYPE	MODEL	CASE DIAMETER (Ø in mm)				
		63	80	100	160	250
A 1140		TXC063XA	TXC080XA	TXC100XA	TXC160XA	TXC250XA
B 1142		TXC063XB	TXC080XB	TXC100XB	TXC160XB	TXC250XB
D 1141		TXC063XD	TXC080XD	TXC100XD	TXC160XD	TXC250XD
F 1148		TXC063XF	TXC080XF	TXC100XF	TXC160XF	TXC250XF
G 1145		TXC063XG	TXC080XG	TXC100XG	TXC160XG	TXC250XG
H 1146		TXC063XH	TXC080XH	TXC100XH	TXC160XH	TXC250XH
I -		TXC063XI	TXC080XI	TXC100XI	TXC160XI	TXC250XI
OPTION (see also page 32)		EXTRA COSTS				
Lx	LIQUID FILLED CASE: GLYCERINE (in combination with electrical device: Ondina oil, see page 43)	TXC063Lx	TXC080Lx	TXC100Lx	TXC160Lx	TXC250Lx